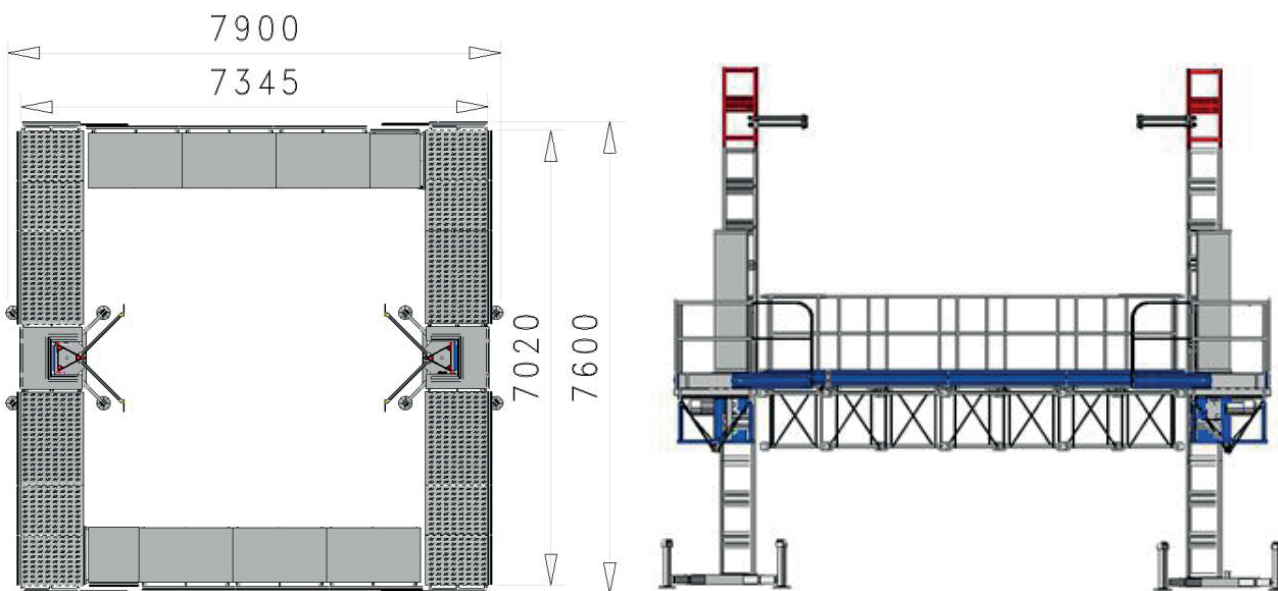


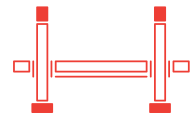


CAPACITÀ DI CARICO

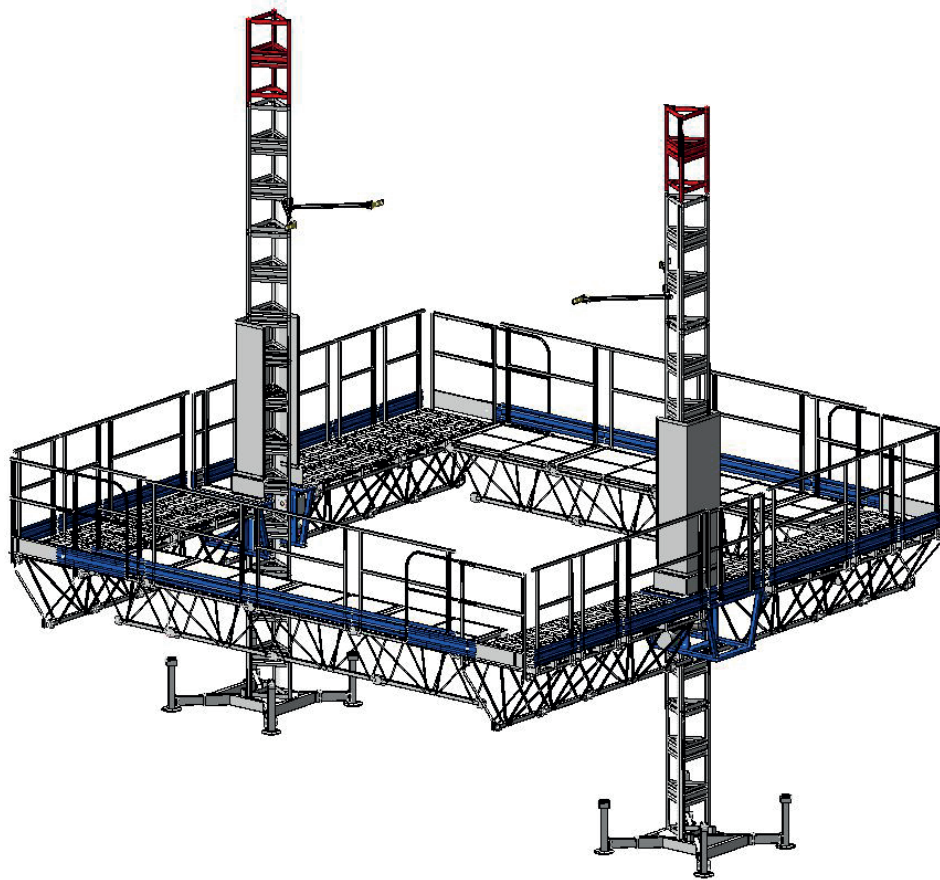
+800 kg	M
 x 4	P



DATI TECNICI	TECHNICAL DATA	DONNEES TECHNIQUES	T 25 SQUARE 2C
massima capacità di carico	max capacity	max charge	800 kg
velocità di sollevamento	lifting speed	vitesse de levage	8 m/min
massima lunghezza piattaforma	max platform length	max longueur plateplate-forme	7,345 m
massima larghezza piattaforma	max platform width	largeur plate plate-forme	1 m
lunghezza standard estensioni	standard extension length	long. standard des extensions	1 m 1,8 m (optional)
massima altezza libera	max freestanding height	hauteur max sans ancrages	2 m
massima altezza ancorata	max anchored height	hauteur max avec ancrages	120 m
intervallo ancoraggi	max tie distance	intervalle ancrages	6 m
tensione alimentazione	input power range	tension d'alimentation	400 V - 50 Hz
potenza servizio continuo	power of the motors	puissance des moteurs	2 x 3 kW
minima potenza di linea consigliata	minimum line power suggested	min. puissance de ligne conseillée	6 kW
dispositivo paracadute	parachute safety device	disp. de sécurité parachute	v





T 25 SQUARE 2C
GAMMA T



**CONFIGURAZIONI DI MONTAGGIO, CARICHI NOMINALI,
PERSONALE AMMESSO ALL'ACCESSO**

T25 SQUARE 2C

 = 80 kg
 = 120 kg

800 kg = 400 kg + 

